

ImproveManager

Gather Ideas & Control and Evaluate Measures



Incl. the new Measure App



Basic Information

Short Definition | Areas of Application | Ready-to-use Philosophy | Advantages

1

Ideas Centrally Managed

Establish Ideas/Improvement Suggestions and Centrally Manage

2

Implementing Improvements

Plan Measures and Control Implementation

3

Evaluation and Follow up

Results and Evaluations of Improvement Measures

4

Integration into the Cosmino[®] MES^{plus}
The Complete Solution for the Improvement Process

5



1

BASIC INFORMATION

Short Definition of Improvement Management

Detect and correct errors, generate ideas to optimize processes and put them into practice, prevent wastage: Production companies use improvement management intensively targeted to reduce costs and improve quality.

Improvement management is all the more successful, the better the following requirements are fulfilled:

- ◆ Transparency: each person involved in the improvement processes gains an insight into the systematically collected ideas and findings (central knowledge database)
- ◆ Objectivity: achievements and failures can be comprehensibly evaluated
- ◆ Integration: idea management (company suggestions system) is smoothly linked with the central measure management module
- ◆ Motivation: ideas can be easily, quickly collected and used without extensive training

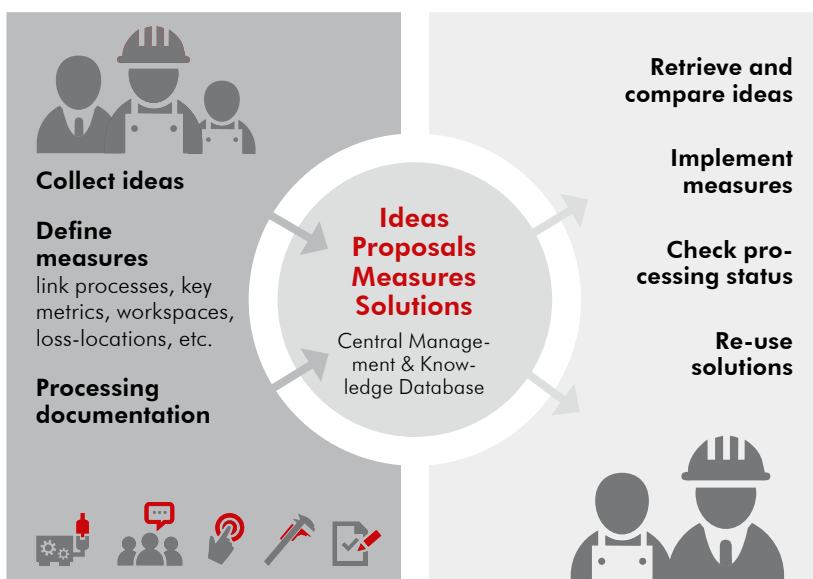
Cosmino® ImproveManager Areas of Application

Cosmino® ImproveManager is a module of the Cosmino® MES^{plus}, where ideas and measures for continuous improvement are centrally collected. It offers a well-proven workflow to process the measures.

The workflow comprises:

- ◆ Collection, evaluation and management of ideas
- ◆ Definition of measures include
 - completion dates
 - responsibility (e.g. person, department)
 - monitoring target values
- ◆ Escalation management: warnings for over-run deadlines and due delivery dates (a reminder function by e-mail, SMS)
- ◆ Transparent access (even across different sites) for all authorized personnel to the knowledge collected and measures initiated
- ◆ Automatically generated final reports
- ◆ Standardized processes or workflows according to PDCA, DMAIC or 8D

Unique is that Cosmino® ImproveManager measures and evaluations are as closely as possible interconnected. Thus, from an evaluation or an audit, with just one click, directly establish an associated action that at all times remains connected with the associated key metrics or information.



1

BASIC INFORMATION

Ready-to-use Philosophy

With Cosmino® ImproveManager a well-proven tool is made available to you, in which the optimization of products and processes with a central idea – and improvement management is combined.

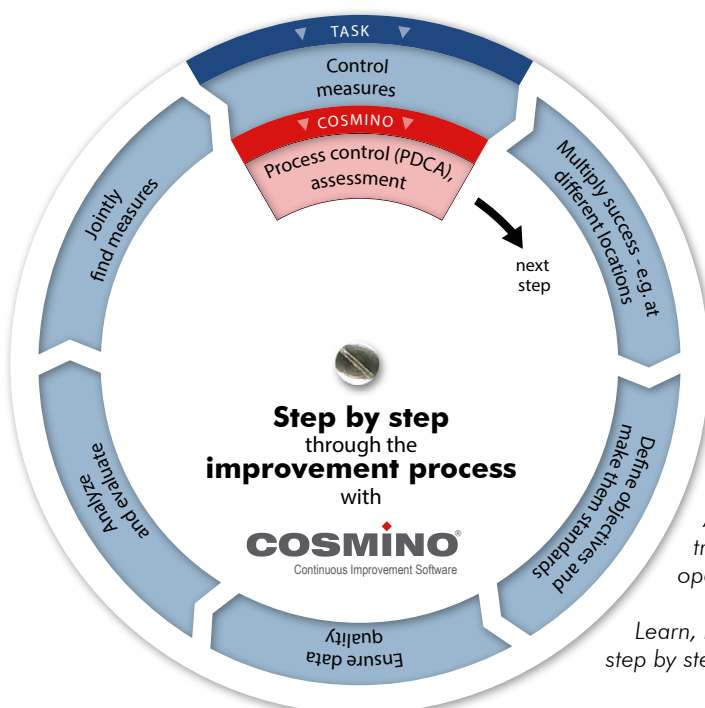
Set up ImproveMan either as an autonomous stand-alone-solution to achieve immediate measurable success.

Or integrate ImproveMan seamlessly into your IT-environment. Existing (master) data, e.g. from an ERP-solution are simply taken over in ImproveManager. This provides you with a previously unattainable concise and comprehensive overview of ideas, measures and progress.

If you would like to expand the functions of Cosmino® ImproveManager, there are currently 16 additional Cosmino® Modules available (see pg. 7).

Your Cosmino® ImproveManager Advantages

- ◆ A permanent impetus for the improvement process: measures can no longer fall asleep when creating and managing individual task lists for each person involved
- ◆ Maximum transparency and knowledge sharing through centralized data management: double-processing is avoided, existing ideas can be easily built upon well-proven workflow for a systematic, consistent and targeted course of action during the execution of measures
- ◆ Responsibilities and implementation phase of a measure can be checked at any time
- ◆ Simple, for each employee immediately easy to understand operation – e.g. due to the linking of tasks with fault locations leaving no possibility of job related typos, all data is at any time easy to find
- ◆ Accurate documentation with help of linked photo, video and voice recordings
- ◆ Less administrative effort through integratable standard software
- ◆ mobile acquisition of improvement measures with App



The Cosmino® user is guided step by step through all work steps of the improvement process.

As the workflow is defined, training and familiarization effort is minimal, and operating errors are largely excluded.

Learn, how Cosmino® supports you step by step: www.cosmino.com



2

MANAGE IDEAS CENTRALLY

Compile Ideas or Proposals for Improvement and Manage Them Centrally

For many companies, it is a real challenge to gather ideas to have them central and ready so that they are not only available at the right time, but are available at the right place.

With Cosmino® ImproveManager this process becomes child's play. Whether during an audit, in a meeting or working on a machine: improvement suggestions can be entered quickly and accurately by any employee.

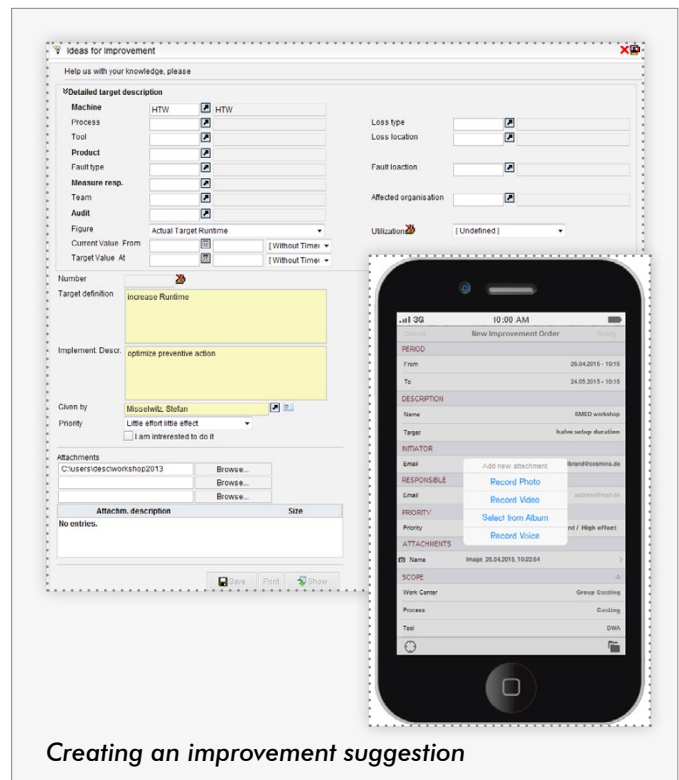
The **award-winning Measure App** enables the mobile documentation of any drawback in the shop floor even without a current connection to the company network. A speech recognition feature supports the creation of measures when entering text, as well as automatic identification of the workstation using a QR code and recording of pictures and video clips. Back in the office as soon as a connection with the network has been established, the tasks are transferred to the manager responsible for the improvement process.

For example, simply by clicking on a bar of an evaluation chart from a Cosmino® report, you can directly enter an improvement proposal – labour-saving and unique on the market.

The practical linking of ideas and measures together with products, work places, evaluations, types of faults, at any time ensures a transparent overview and easy retrievability.

Your Cosmino® ImproveManager Advantages

- ◆ Useable at any workplace because it is browser-based
- ◆ Flexible application of improvement proposals from reports, audits or from discussions directly at the plant facility
- ◆ Precise and targeted problem definition due to the unique linking of suggestions for improvement with work areas, products, processes, loss locations, etc.
- ◆ Detailed descriptions and documentations (before/after) with the support of pictures, sketches and any attachments (photo, video, and voice recordings)
- ◆ Print a receipt of submitted proposals including calculation of premium
- ◆ Acquisition of existing data resources (SFDC, CAQ, MES, ERP) for comprehensive measure management



Creating an improvement suggestion

3

IMPLEMENTING IMPROVEMENTS

Planning Measures to Be Taken to Ensure the Implementation of Actions

With ImproveManager, you can define, centrally evaluate and systematically control all measures which have been gained on the basis of these findings.

At the same time, accountability as well as determining the problem description, completion deadlines and target values are obtained.

Speed Measures

These so-called "speed tasks" are improvement measures and can be carried out immediately without an administrative burden.

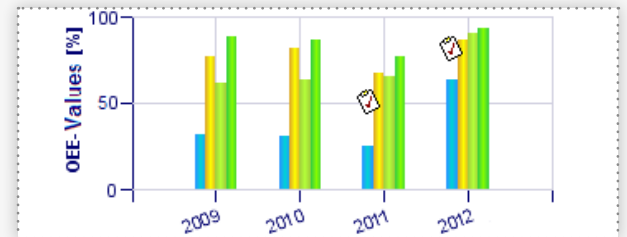
Improvement Orders

An "improvement order" is created as soon as several steps are required (e.g. analysis, decision, execution and documentation).

Improvement measures are worked off step by step following an individually configured workflow framework.

Your Cosmino® ImproveManager Advantages

- ◆ Individually adapted to your needs (workflow steps, dialogue content and analysis)
- ◆ Clear, personal task lists of open proposals and measures including due dates
- ◆ Systematic control of activities in accordance with standards such as PDCA, DMAIC or 8D
- ◆ Time saving: no more double handling since all authorized persons regardless of location are able to centrally access the data



In charts, the measures assigned, are depicted as a clickable notepad icon

Open Chance / Problems - List (5 Hits)

Cat.	No	Chance	Status	Due date
💡	2013.0004	Set up vehicle new tires	⊕	🟢🟢🟢🟢
📝	2013.0005	(2013.0005): Machine too slow, conveyor unconstant	⊕	🟢🟢🟢🟢
💡	2013.0006	reduce scrap rate	⊕	🟢🟢🟢🟢

To-do list containing new ideas to accept and pending tasks

	⊕ Ideas	⊕ Analysis	⊕ Decisions	⊕ Executions	⊕ Documentations	ALL
💡 Improvement Ideas	0 / 8	8 / 17	1 / 1	0 / 4	0 / 2	9 / 32
📝 Improvement Orders		7 / 12	0 / 7	1 / 8	0 / 5	8 / 32
⚡ Speed Tasks				0 / 26		10 / 26
🚨 Deficiency Cards				1 / 2		1 / 2
ALL	0 / 8	15 / 29	1 / 8	2 / 40	0 / 7	18 / 92

Due/Total Number

Processing status in a defined workflow: overview of the collected proposals and tasks

- ◆ Automatic escalation management (i.e. an e-mail automatically sent to those responsible for deadlines or exceeded due dates)
- ◆ Comprehensive, as with just a single standard software, all improvement measures can be managed

Archive with further images:
www.cosmino.de/en/software/improvemanager/



4

EVALUATION AND FOLLOW UP

Results and Evaluations of Improvement Measures

With customizable status reports you have at all times an open and complete overview of measures.

Status reports are time saving as they are automatically generated and can be printed with a mouse click.

The success of the initiated measures can with Cosmino® Reporting System also be analysed as target values and achieved values are visualized there.

A highly valued advantage is, that ImproveManager becomes the central knowledge database for ideas and improvements. Each authorized person can therefore, in the simplest way follow which problems or error images have already been responded to with measures and how successful these were.

Even group wide usage is possible without problems as measures are always clearly associated with multi-lingual base data.

Your Cosmino® ImproveManager Advantages

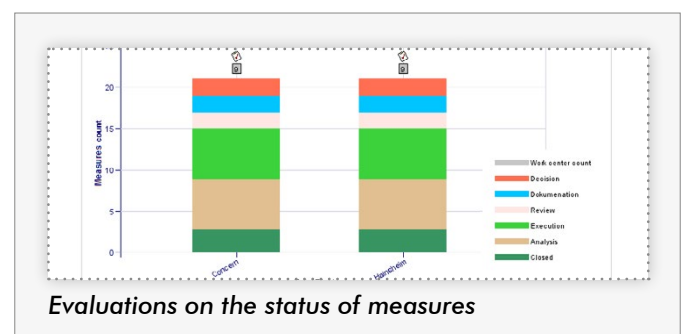
- ◆ Objectified success based on objective data
- ◆ Uniform, structured processing and documentation of the improvement success
- ◆ Time-saving through automatically generated reports with visualized goals for permanent evaluation and monitoring the success of measures
- ◆ Well-proven status reports, final reports and certificates
- ◆ Low investment costs
- ◆ Multilingual user interface
- ◆ Minimal effort for putting into operation and minimal operating costs



Status Report					
Type of Improvement	Improvement order				
Tip	(2012.0033): External preparation				
Target definition	Toll change lasts too long				
Implement. Descr.	SMED				
Measure responsible person	Misselwitz, Stefan				
Status	Execution				
Task responsible person	Misselwitz, Stefan				
Due date	11.03.2013				
Scope					
Machine	HTW	Loss type	Tool change		
Process	Set up	Loss location			
Tool	0814-2				
Product					
Fault type		Fault location			
Team		Affected organization			
Key figure		Mean loss time [h:mm]			
Time granularity		Week			
Start value	1146,52	25.10.2012			
Target value	60	31.10.2013			
Current value	900	25.11.2012			
Journal					
No.	Item	Created	Author	Current value	Achieved potential
2.	Tool vehicle helps fitting the tool; time saving: 15minutes	24.11.2012	Misselwitz, S.	900	500
1.	Purchase of tool heater	04.11.2012	Misselwitz, S.	1100	0



Printable status report which lists the current status of improvement measures



- ◆ Motivating personnel by publishing success with printed awards
- ◆ Universal improvement management, which not only can be used in production, but also in other areas of the company

5

INTEGRATION INTO THE COSMINO® MES^{plus}

COSMINO AG supports you in getting the full potential of your manufacturing and achieving the best results:

- ◆ More output
- ◆ Better quality
- ◆ Increased reliability
- ◆ Reduced costs
- ◆ Full transparency

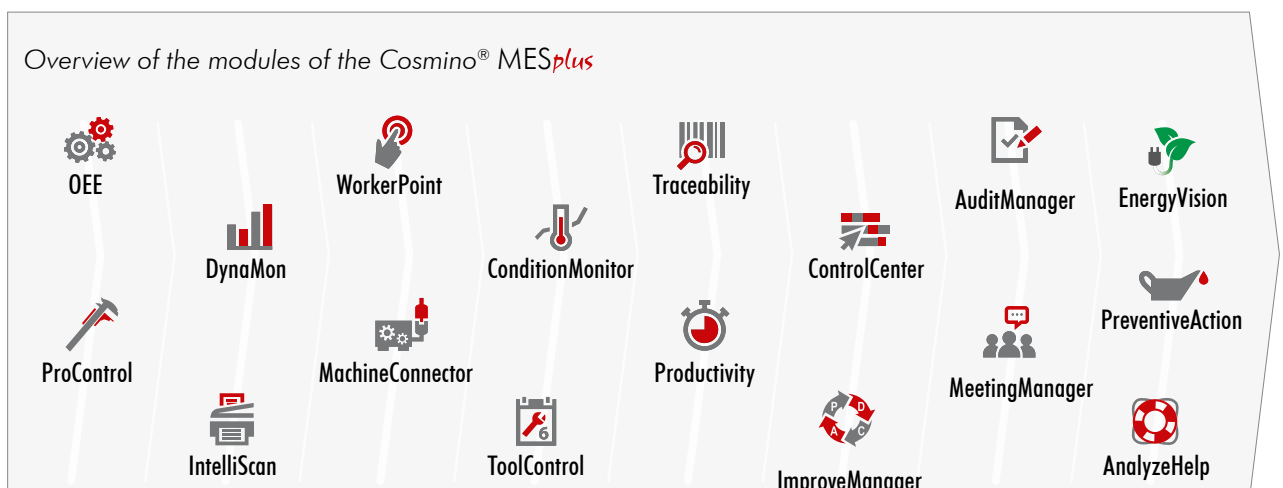
Our software belongs to the field of Manufacturing Execution Systems (MES) and can therefore be your navigator on the path to Industry 4.0 (Integrated Industry).

Thanks to more than 26 years of project experience, we can count global companies like BMW AG, Daimler AG and Continental AG among our clients today.

Thanks to its modular, standardized architecture, Cosmino® MES^{plus} offers particularly medium-sized companies from various industries important support in the optimization of their processes and products.

Your Cosmino® MES^{plus} Advantages

- ◆ Focus on people
(their knowledge will be developed and used)
- ◆ Causes instead of symptoms for downtimes
(by integrating the employee's knowledge)
- ◆ Reporting system oriented on measures
(award-winning, fully automated and easily understood)
- ◆ Integrated improvement management system
(measures are linked to metrics)
- ◆ Quick start (*express*) is possible
(automate data from paper forms; get digital data by scanning)
- ◆ Award-winning Online Data Acquisition Dialog
(acquires data and displays information)



COSMINO AG has specialized
in consulting, software development and service
in the fields of Manufacturing Execution Systems (MES) and
continuous improvement processes since 1988.



COSMINO AG supports industrial companies of any size achieve full potential of their manufacturing systems and shows how the best possible result can be achieved using the existing resources. From data acquisition to improvement management, the potential of all employees will be brought to bear.

Have we awakened your interest?
Our sales team is looking forward
to making contact with you!

COSMINO AG

Breitengraserstraße 8
90482 Nuremberg
Germany

Fon: +49 (0) 911 46 26 76-0

Fax: +49 (0) 911 46 26 76-76

www.cosmino.com
info@cosmino.de