

# WorkerPoint

Enter Data and Call up Information Online and in Real Time



- Basic Information** 1

Short Definition | Areas of Application | Ready-to-use Philosophy | Advantages
- Data Entry & Information Call-up** 2

Overview of the Most Important Features
- WorkerPoint Advantages** 3

Overview of the Most Important Advantages
- Continuous Improvement** 4

Functions for Supporting the Improvement Process
- Integration into the Cosmino<sup>®</sup> MES<sup>plus</sup>** 5

The Complete Solution for the Improvement Process



**1**

## BASIC INFORMATION

### Short Definition of Online Data Entry

Computer-aided data entry and provision in a communication network (e.g. Intranet or Internet) in production is referred to as "online data entry".

Recording of work center downtimes, in order to expose improvement potentials, is one important area of application.

Different to data entry via paper documents, online data entry delivers information from production reliably and in real time. Downtimes can be reduced more effectively, problems can be immediately addressed and re-planning is significantly easier (for example in the case of frequent order changes).

As it is possible to guide a user systemically through the data entry process, training costs for online data entry are usually significantly lower than for paper document entry.

### Cosmino® WorkerPoint Areas of Application

Cosmino® WorkerPoint is the ergonomic communication interface between employee, system and other modules of the Cosmino® MESplus.

WorkerPoint, as an Human Machine Interface (HMI), transforms every workstation into a multi-functional information platform, which provides all important information and functions of the deployed Cosmino® modules at the push of a button.

**Data entry** (SFDC, MDC\* e.g. downtimes, error types, audits, measures ...) is possible, as well as

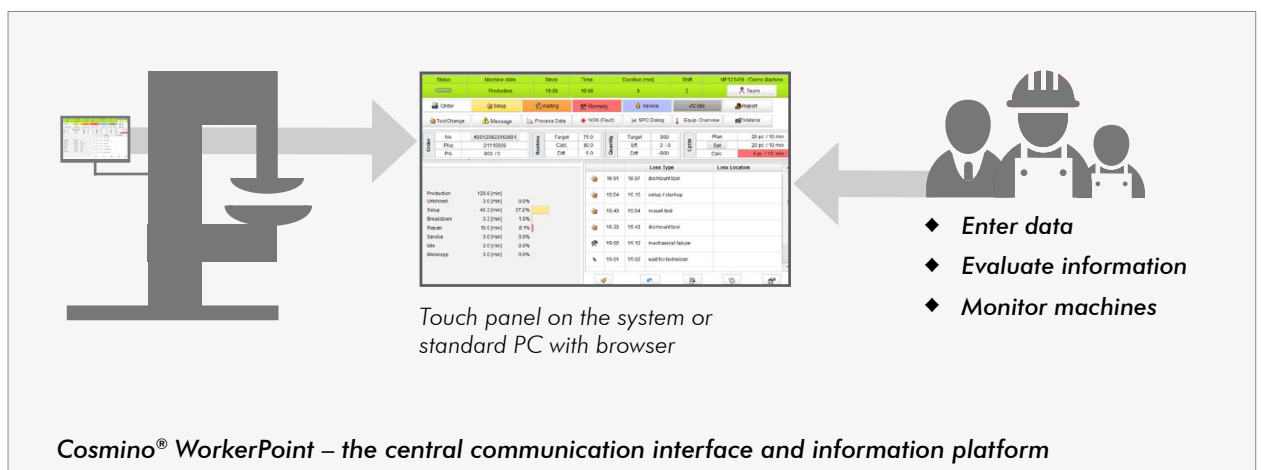
**Information display** (e.g. process data including monitoring, evaluations via error types and downtimes, audit results, processing status of measures ...).

Cosmino® WorkerPoint integrates the improvement process into every work sequence, as proposed solutions can be immediately documented for malfunctions and errors, and measures can be immediately initiated.

\*SFDC - Shop Floor Data Collection, MDC - Machine Data Collection

#### WorkerPoint Video

Learn more about the Features and Advantages in our short video introduction!  
[www.youtube.com/user/cosminoag](http://www.youtube.com/user/cosminoag)



## 1

## BASIC INFORMATION

### Ready-to-use Philosophy

Cosmino® WorkerPoint is a lean and easy-to-use solution, which can be immediately used.

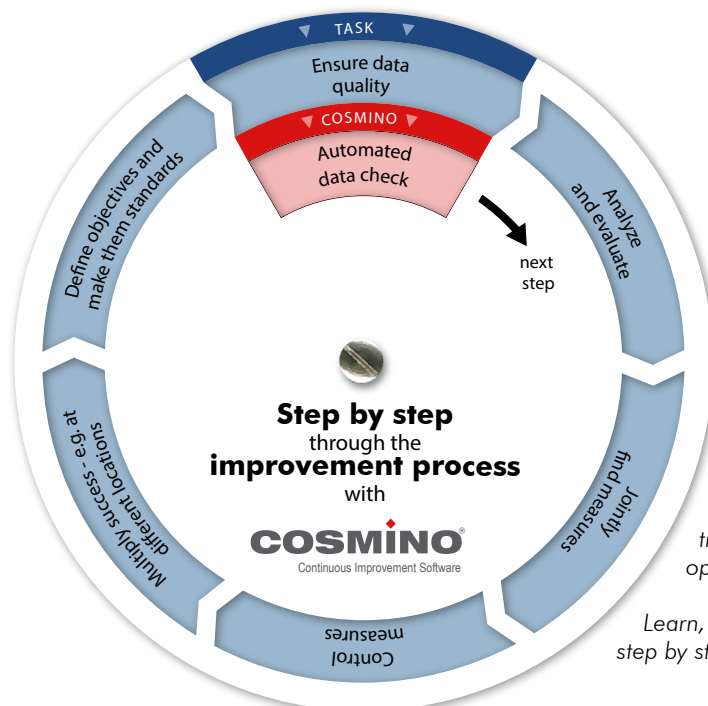
As WorkerPoint runs as web application in every standard Internet web browser, you do not require a separate computer, and software installations are not necessary either. The only requirement is Internet access.

The Human Machine Interface can be used with and without system connections.

Despite their highly complex interface designs, system controls of machines typically deliver just symptoms of downtimes. When additional information is required or when available signals do not sufficiently indicate downtimes the machine operator is needed for appraisals.

### Your Cosmino® WorkerPoint Advantages

- ◆ Can be used on systems and assembly work centers
- ◆ Coupling with system control it is possible to obtain objective time information (e.g. via light sensor)
- ◆ Minimum training costs, as clear and intuitive user interface (e.g. a work center status is indicated using the same color in all Cosmino® modules)
- ◆ Multiple machine operation using one work center possible without problems
- ◆ Real-time view of production with the option to display work center states in Gantt charts or factory displays
- ◆ Highly flexible, as program interface and functions can be individually customized
- ◆ Fast and precise production data entry and data processing at the workstation, paperless information processing
- ◆ Very simple operation of the program interface via a touch panel with large function keys
- ◆ Very high data quality, as data is already checked for plausibility during entry



*The Cosmino® user is guided step by step through all work steps of the improvement process.*

*As the workflow is defined, training and familiarization effort is minimal, and operating errors are largely excluded.*

*Learn, how Cosmino® supports you step by step: [www.cosmino.com](http://www.cosmino.com)*

## 2

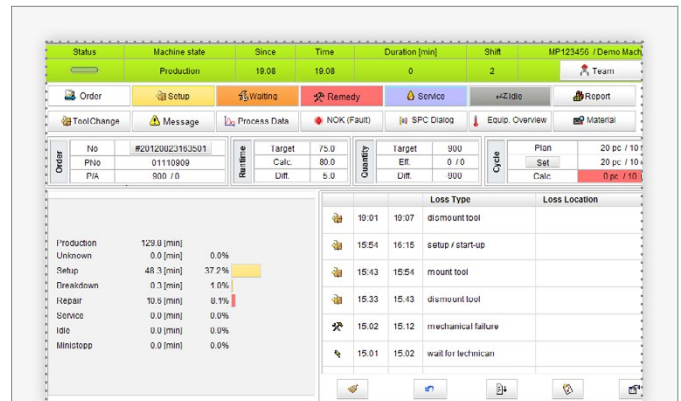
## DATA ENTRY AND INFORMATION CALL-UP

### The Most Important Features

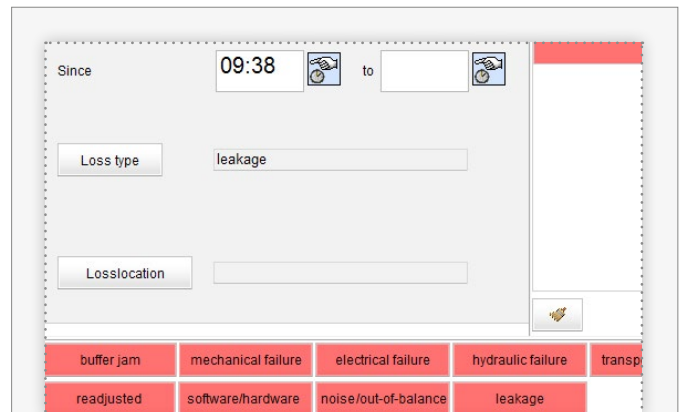
Using Cosmino® WorkerPoint, employees access a multitude of functions and information via one program interface.

The following functions are available to you, as long as the respective Cosmino® modules are deployed:

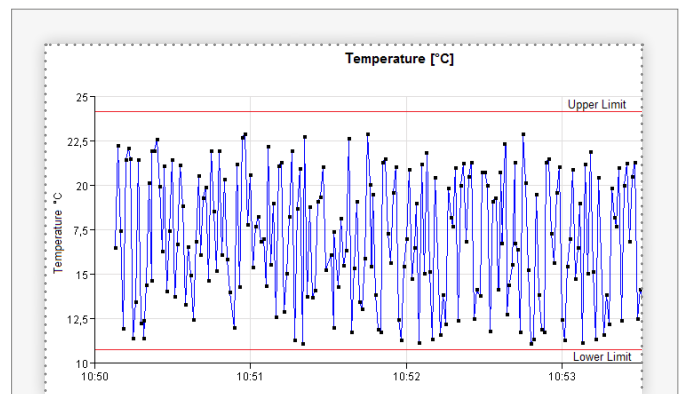
- ◆ Select and display work center states: production, unscheduled states (setup/waiting), scheduled states (service)
- ◆ Document setup times and tool changes
- ◆ Enter downtimes and analyze as loss types and locations
- ◆ Monitor process and machine parameters (pressure, temperature, ...) with warnings in the case of limit value violations
- ◆ Document output losses (e.g. cycle slowdowns)
- ◆ Record quality losses via error collection charts (NOK recording) and quality control charts (according to Cosmino® test plan)
- ◆ Register shift/employee changes and adjust cycling for assembly lines
- ◆ Enter employee times with password log in
- ◆ Review reports
- ◆ Create measures
- ◆ Conduct audits
- ◆ Review order data (product, quantities, runtime, cycle, work center state duration)
- ◆ Generate "done" messages for ERP system
- ◆ Post and track stock (Traceability)
- ◆ Check target/actual quantities and continuously calculate key indicators (Andon Board)
- ◆ Remind regarding recurring measures, e.g. maintenance, random sampling, audits



*WorkerPoint view in the case of running production*



*Acquisition of loss types and loss locations*



*Chronological profile of the temperature process parameter*

## 3

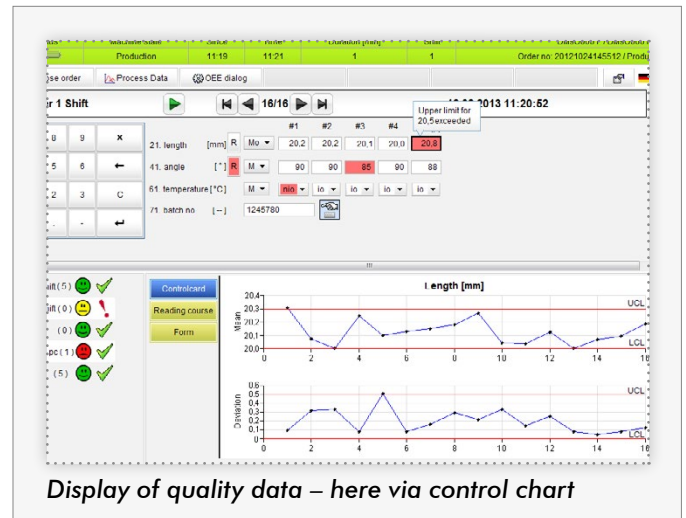
## WORKERPOINT ADVANTAGES

### Your Cosmino® WorkerPoint Advantages

- ◆ Fast response to utilization fluctuations and downtimes possible, as production data is entered and illustrated in real time
- ◆ Precise and gap-free entry, as every missing cycle signal is recorded
- ◆ High flexibility: WorkerPoint can be combined with paper document entry
- ◆ Fast access to detailed information about loss types and locations
- ◆ High data quality through automatic data checking (validation)
- ◆ Statements about tool service life and service life quantities are possible
- ◆ Saving of achieved SMED successes through ongoing setup phase recording
- ◆ Real-time view of work center states from every workstation (e.g. maintenance office, management)
- ◆ Downtime duration reduction through automatic notification of repair team
- ◆ Perfectly customized to your processes, as many configuration options available
- ◆ Seamless integration into your IT environment (e.g. SAP and other ERP systems) through order application and real-time stock posting
- ◆ Your production employees can work more efficiently and faster, as WorkerPoint offers great time savings and simplifications
- ◆ awarded the "BEST OF Industry and IT" Innovation Prize 2014

Further information can be found in the respective Cosmino® brochures

Archive with screen images:  
[www.cosmino.de/en/software/workerpoint/](http://www.cosmino.de/en/software/workerpoint/)

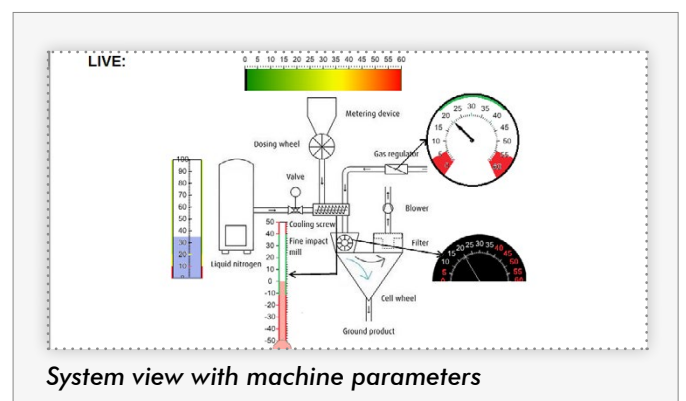


Order	No	#20121115102406	Runtime	Target
	PNo	040054		Calc.
	P/A	100 / 10		Diff.

Producer rework	Producer scrap	
0 + 1	0 + 1	damage
0 + 1	0 + 1	dimensional deviation
0 + 1	0 + 1	scratching
0 + 1	0 + 1	dent
0 + 1	0 + 1	surface roughness

**Dialog for error entry**



### Functions for Supporting the Improvement Process

WorkerPoint supports you with thought-out functions, which keep your improvement process simple and efficient:

- ◆ Reports can be directly called up from WorkerPoint (e.g. evaluations for OEE loss reports, audit results)
- ◆ Audits can also be conducted directly at the workstation, reminders are issued regarding pending audits
- ◆ Improvement suggestions and measures can be entered at any time and are immediately available at all workstations

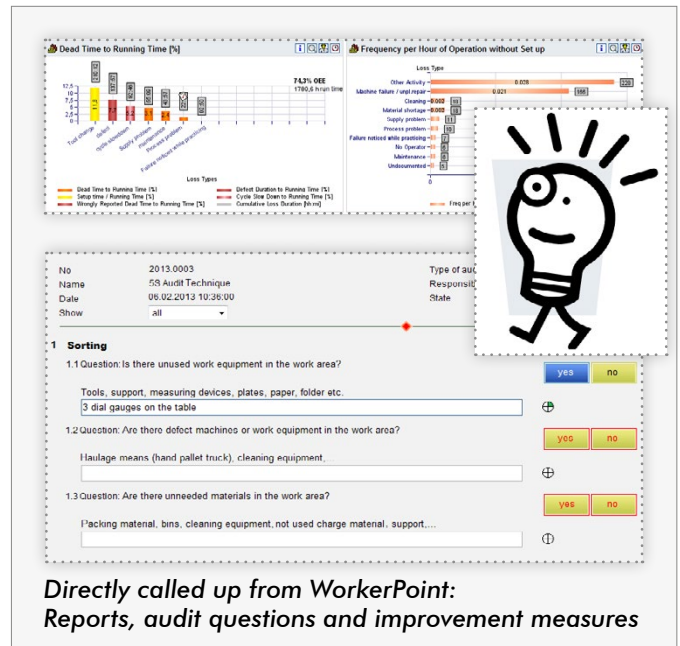
### Supporting the Shop Floor

Via the **Multiple Machine Operation**, an operator can monitor up to 24 work centers in a single online interface. When several machines are affected by the same malfunction, the identified cause of the loss can easily be transferred to any number of other selected machines. This leads to a significant reduction of the appraisal efforts required from the operator.

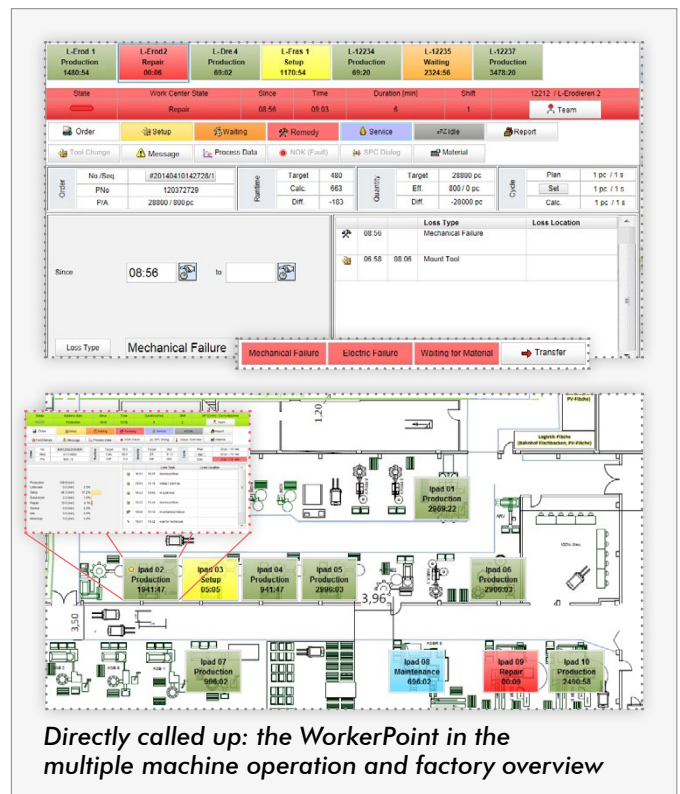
When viewing the **Factory Overview** that depicts the actual layout of the production site, individual work centers and their corresponding status are easily identifiable. This is especially valuable for maintenance personnel. Being able to immediately identify machines with downtimes or malfunctions, lead times for repairs can be noticeably shortened.

### Your Cosmino® WorkerPoint Advantages

- ◆ Real coexistence: easily switch between WorkerPoint and other applications (e.g. system control) on the screen or touchscreen



Directly called up from WorkerPoint: Reports, audit questions and improvement measures



Directly called up: the WorkerPoint in the multiple machine operation and factory overview

**5**

## INTEGRATION INTO THE COSMINO® MES<sup>plus</sup>

COSMINO AG supports you in getting the full potential of your manufacturing and achieving the best results:

- ◆ More output
- ◆ Better quality
- ◆ Increased reliability
- ◆ Reduced costs
- ◆ Full transparency

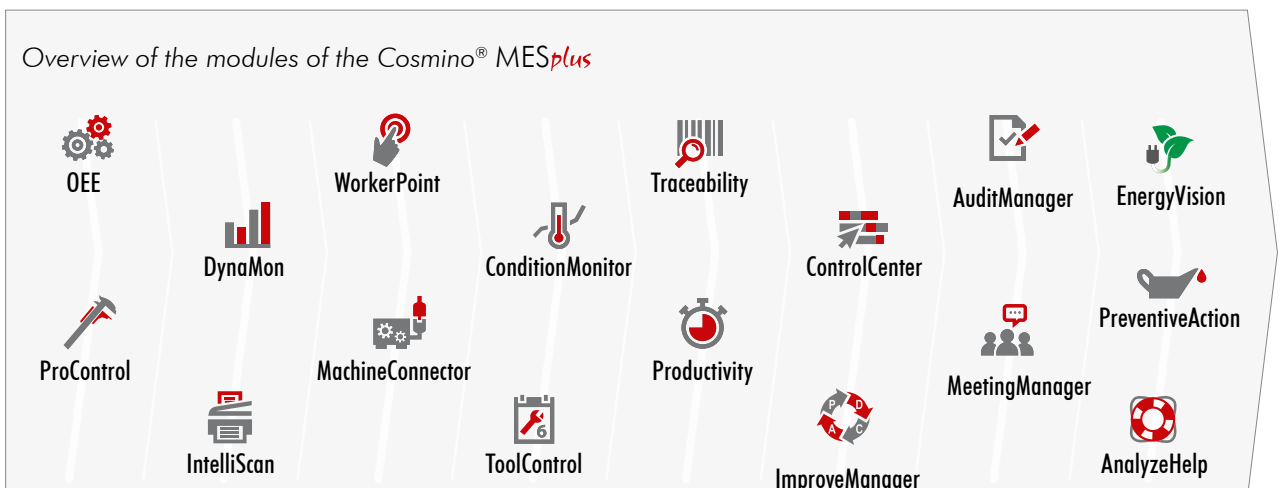
Our software belongs to the field of Manufacturing Execution Systems (MES) and can therefore be your navigator on the path to Industry 4.0 (Integrated Industry).

Thanks to more than 26 years of project experience, we can count global companies like BMW AG, Daimler AG and Continental AG among our clients today.

Thanks to its modular, standardized architecture, Cosmino® MES<sup>plus</sup> offers particularly medium-sized companies from various industries important support in the optimization of their processes and products.

### Your Cosmino® MES<sup>plus</sup> Advantages

- ◆ Focus on people (their knowledge will be developed and used)
- ◆ Causes instead of symptoms for downtimes (by integrating the employee's knowledge)
- ◆ Reporting system oriented on measures (award-winning, fully automated and easily understood)
- ◆ Integrated improvement management system (measures are linked to metrics)
- ◆ Quick start (*express*) is possible (automate data from paper forms; get digital data by scanning)
- ◆ Award-winning Online Data Acquisition Dialog (acquires data and displays information)



COSMINO AG has specialized  
in consulting, software development and service  
in the fields of Manufacturing Execution Systems (MES) and  
continuous improvement processes since 1988.



COSMINO AG supports industrial companies of any size achieve full potential of their manufacturing systems and shows how the best possible result can be achieved using the existing resources. From data acquisition to improvement management, the potential of all employees will be brought to bear.

Have we awakened your interest?  
Our sales team is looking forward  
to making contact with you!

**COSMINO AG**

Breitengraserstraße 8  
90482 Nuremberg  
Germany

Fon: +49 (0) 911 46 26 76-0

Fax: +49 (0) 911 46 26 76-76

[www.cosmino.com](http://www.cosmino.com)  
[info@cosmino.de](mailto:info@cosmino.de)